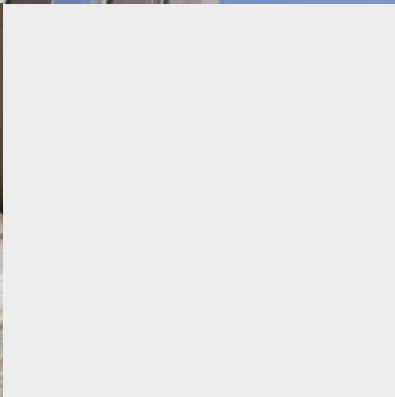
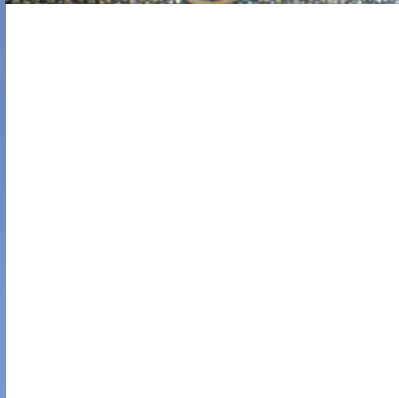


DESIGN FREELY IN METAL

FINISH EACH SURFACE WITH

A REAL METAL COATING



VeroMetal[®]

Miles ahead, you notice

VeroMetal®

Miles ahead, you notice



Unlimited formability and unique design

Our coating made from real metal gives architects, interior designers, stylists and artists all the flexibility they require to produce truly pioneering designs. Producers of products who also need a metal touch choose VeroMetal® to give their products an exclusive appearance or distinctive properties.

Luxurious and durable

Add an exclusive finishing touch to your yacht, hotel and shop interior designs. Obtain a luxurious look by using our strong, durable, lightweight metal surface coatings. Ensure every design takes on the authentic characteristics of metal.



Architectural flair

Facades, walls, floors, furniture or construction elements can all be enhanced by using VeroMetal®. Complement the robust and authentic with a highly polished finish, or striking texture.



VeroMetal® cold-workable liquid metal

VeroMetal® is a cold-workable liquid metal that can be applied to practically any surface by spraying, rolling, pouring or with a palette knife or trowel. After application, VeroMetal® possesses all the optical and physical properties of the metal in question. A unique final finish is achieved by sanding, polishing, patinating or oxidising the surface. Each object takes on a unique and characteristic metal look. VeroMetal® is made from real metal and can be applied both indoors and outdoors. In addition to sprayable VeroMetal®, we also have a stucco product in our range, VeroMetal AquaFill®. With this metal stucco, each wall or floor takes on a characteristic metal look. VeroMetal® and VeroMetal AquaFill® adhere well to virtually all surfaces.



Extensive range

VeroMetal® is available in many different kinds of metal, such as brass, bronze, copper, 'gold', iron, nickel-silver and zinc. Every metal can be processed in various ways, such as by brushing, polishing and weathering. Each end result is unique. Would you like to have a first impression of all metals and possible finishes? Then, please visit our website verometal.com.

Proven quality

Design freedom is not the only reason why leading architects and designers use VeroMetal®; long-standing experience and proven quality are further convincing arguments. Our high-profile indoor and outdoor projects are the best proof of our capabilities: a number of these projects are highlighted on our website. Examples where the application of VeroMetal® can be seen are in the Louvre Abu Dhabi, as well as in many luxurious retail chains, on art objects and eye-catching façade cladding. Our ultimate goal is to create a fantastic final result for all projects where ever VeroMetal® is used. To achieve this, we collaborate with a carefully vetted network of authorised application specialists and plasterers. VeroMetal® application specialists and plasterers are well-trained and qualified. Please contact us when you want to become a VeroMetal® application specialist.



Environmentally friendly and light weighted

Engineer a design with 90% less metal. Replace solid metal parts with a more environmentally friendly and light weighted solution. Choose a lightweight substrate material and coat it with a VeroMetal® metal finish of 120-150 microns. The project has the characteristics and appearance of real metal, but consumes significantly less metal resources. In addition, the lighter construction provides a saving on energy because less weight is moved.



VeroMetal®

Miles ahead, you notice



VeroMetal® is the one and only original liquid metal and a proven concept for years, with the highest quality standards. Building long lasting relationships with architects, designers, distributors and applicators are key to us. Our objective is to share all the technical knowledge and year of experience with our customers, to help them realise the best metal finish for their customers. Supporting everybody in its own role and activity in the chain to realise extraordinary high-end projects.

Cover bottom right:
Caren Pardovitch Interior Design

Exterior design
certified façade solutions

Interior design
infinite possibilities

Superyachts
excellent finishes

Industry
exclusive surfaces

Paint shops
high-end projects that make a difference

Plasterers
unique wall finishes

