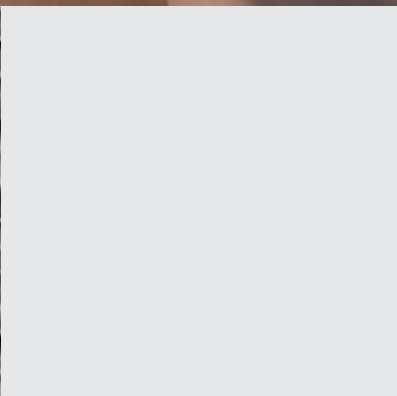


DESIGN FREELY IN METAL

GIVE EACH SURFACE

A UNIQUE CHARACTER



VeroMetal[®]

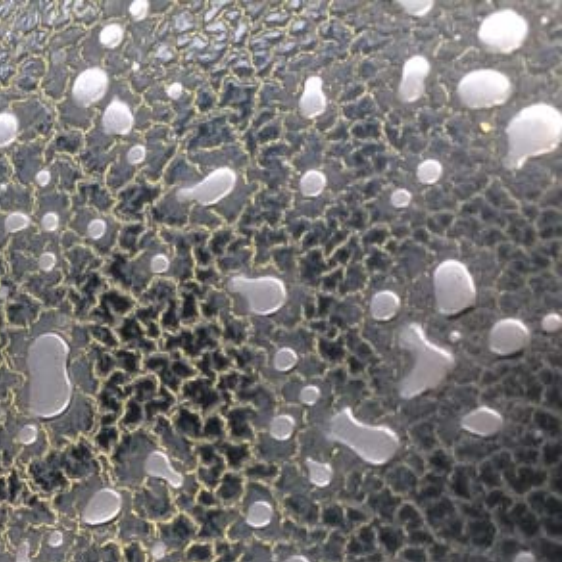
Miles ahead, you notice



VeroMetal® cold-workable liquid metal

VeroMetal® is a cold-workable liquid metal that can be applied to practically any surface by spraying, rolling, pouring or with a palette knife or trowel. After application, VeroMetal® possesses all the optical and physical properties of the metal in question.

A unique final finish is achieved by sanding, polishing, patinating or oxidising the surface. Each object takes on a unique and characteristic metal look. VeroMetal® is made from real metal and can be applied both indoors and outdoors. It adheres well to practically all surfaces and does not crack or peel away.



Extensive range

VeroMetal® is available in many different kinds of metal, such as brass, bronze, copper, 'gold', iron, nickel-silver and zinc. Every metal can be processed in various ways, such as by brushing, polishing and weathering. Each end result is unique.

Would you like to have a first impression of all metals and possible finishes? Then, please visit our website www.verometal.com at 'metals & finishes'. For an overview of designs with VeroMetal®, please go to 'gallery'.



Proven quality

Design freedom is not the only reason why leading architects and designers use VeroMetal®; long-standing experience and proven quality are further convincing arguments. Our high-profile and special projects are the best proof of our capabilities: a number of these projects are highlighted under 'Gallery'. For example, VeroMetal® has been used in the Louvre Abu Dhabi and luxurious retail chains for various works of art and as an eye-catching façade cladding.



Environmentally friendly and sustainable

Engineer a design with 90% less metal. Replace solid metal parts with a more environmentally friendly solution. For example, choose a lightweight substrate material and coat it with a VeroMetal® metal finish of 120-150 microns. The project has the characteristics and appearance of real metal, but significantly fewer metal resources are consumed. In addition, the lighter construction provides a saving on energy because less weight is moved.



Unlimited formability and unique design

This finishing coating made from real metal gives architects, interior designers, stylists and artists all the flexibility they require to produce truly pioneering designs. Every design takes on the authentic characteristics of metal.

Luxurious and durable

Exclusive finishing touch to your design for yachts, hotels and shop interiors. Strong, durable, lightweight metal surface coating with a luxurious look.



Architecture with flair

Façades, walls, floors, furniture or construction elements. Robust and authentic, polished to a mirror finish, or with a striking texture.

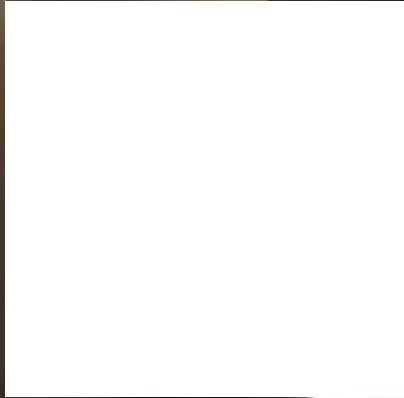
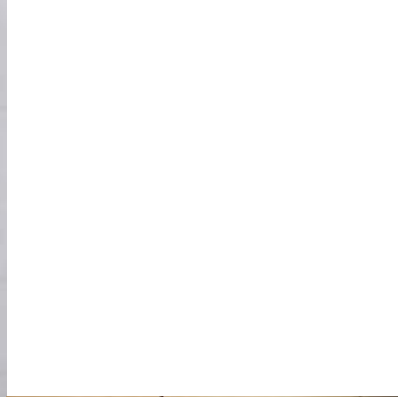
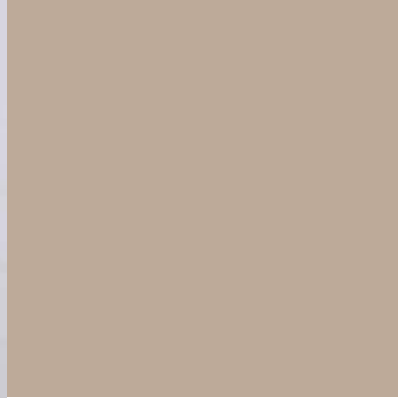


VeroMetal[®]

Miles ahead, you notice

VeroMetal®

Miles ahead, you notice



www.VeroMetal.com



Cover bottom right:
Caren Pardovitch Interior Design